



JAMES
ANDERSON



FOR SALE

£750,000

Disraeli Gardens, London, SW15

Nestled in the prestigious Disraeli Gardens, this exquisite ground floor is a rare find and offers a perfect blend of comfort and elegance. Spanning an impressive 948 square feet, the property features two spacious bedrooms and a well-appointed bathroom, a stunning living room and large kitchen diner.

The flat is situated within a stunning mansion block, renowned for its sought-after location and beautiful communal grounds, which include a tennis court for residents to enjoy. The high ceilings and large sash windows create a bright and airy atmosphere, allowing natural light to flood the living spaces. The generous kitchen diner is perfect for entertaining guests and benefits from views of the communal grounds.

Conveniently located just five minutes from Putney Underground station, this property offers excellent transport links to central London. Additionally, Brandlehow School and the picturesque Wandsworth Park are within easy reach, making it an ideal choice for families with children.



Two Bedrooms



One Bathroom



Beautiful Reception Room



Large Kitchen Diner



EPC Rating D - Council Tax Band E - Share of Freehold



5 Minutes from East Putney Underground



Brandlehow Primary School Catchment



Stunning Communal Grounds, Tennis Court



High Ceilings Throughout, 948 Sq Ft

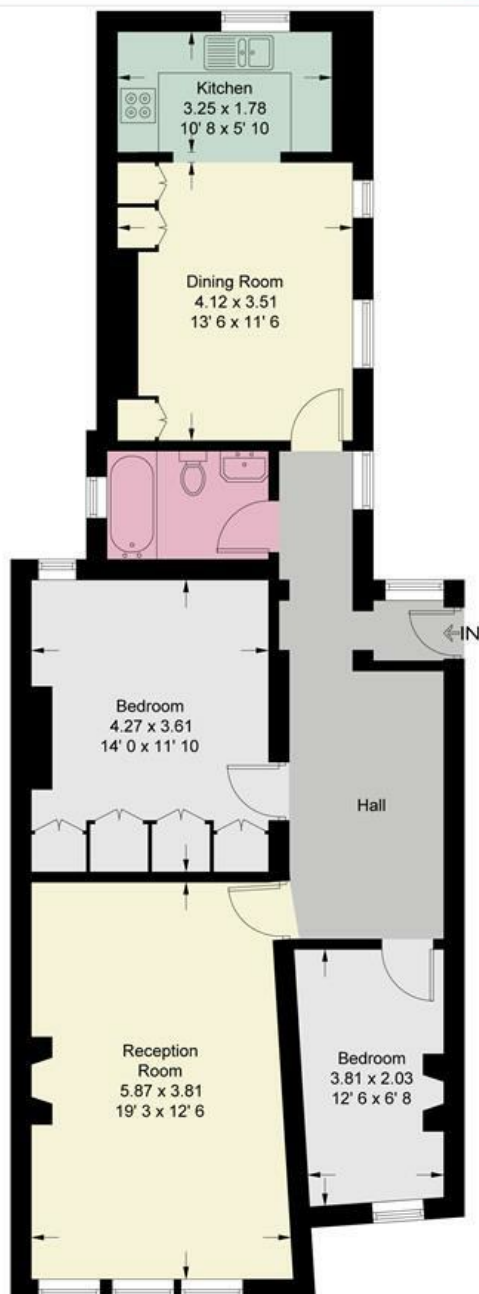


Large Hallway, Study Area



OPEN 7 DAYS A WEEK • Weekdays until 9pm • Weekends until 5pm

0208 785 4400



This plan is not to scale and must be used as layout guidance only. All measurements and areas are approximate and should not be relied upon to provide accurate information. This plan must not be relied upon when making property valuations, design considerations or any other such relevant decisions. We accept no responsibility or liability (whether in contract, tort or otherwise) in relation to any loss whatsoever arising from or in connection with any use of this plan or the adequacy, accuracy or completeness of it or any information within it.

